

CAPABILITY STATEMENT

OBJECTIVE

At Anchor Marine Services Pty Ltd, our primary objective is to provide Independent and unbiased representation, in accordance with our clients' scope of work and special instructions. We provide **Client Representation, Marine Survey, Project Management** and **Appraisal Services**, that serve our clients interests, and provide them with the highest possible level of representation, while promoting our core values of; Stewardship, Honesty & Integrity, Value Adding, and Protection of our clients' reputation.

BACKGROUND

AMS was established in 2011, initially to supply client representative and project management services for vessel maintenance, repairs and dry-docking projects. AMS quickly expanded to also provide a board range of Professional Marine Surveys.

AMS was founded by Director Mr. Justin Bentink, who has developed as a; Tradesman Fabricator, Design Engineer, Naval Architect, Marine Surveyor with two IACS societies and later a Marine Project Manager. This experience is both unique and invaluable in realising the required combination of skills for a competent Client Representative and Marine Surveyor.

At AMS we have a solid technical skills in; Naval Architecture, Structural Engineering, Vessel Construction and Commissioning, Classification Society practices, Fabrication and Welding, QC & QA systems, and International Marine Statutory regulations, which is complemented by practical experience gained in the Offshore Industry, Private and Government shipyards, Mining Company Port facilities, Floating and Dry-docks, Machine shops, Foundries, Mechanical Testing Laboratories, and Manufacturer facilities for Engines, Switchboards, marine components.

We have personal experience dealing with all sectors of the design and construction process from factory skilled Labour to board members of major corporations. Our ability to understand and interact with all parties means our clients don't have to.

Our broad experience has been enhanced by the wide variety of Vessels worked on, including;

Cargo	:	Container ships, Bulk Cargo, General Cargo, Livestock carriers, Barges, Tankers.
Offshore	:	OSVs (DP systems), FPSO facilities, MODU drilling rigs
Private	:	Luxury Motor Yachts, Charter vessels, Limousine tenders,
Naval	:	Patrol vessels, Naval Support, Littoral Combat vessels & Naval Frigates.
Workboats	:	Tugs, Ocean Towing vessels, Construction Vessels, Fishing vessels, Hydrographic & Research vessels, and High Speed Ferries.

NETWORK

AMS maintains relationships with a wide network of Marine, Government and mining industry participants, each proven to be expertly qualified and competent, in their discipline. We have access to professionals located in Oceania, Southeast Asia, and P.R China, to ensure the client has access to the skill set required to complete each task. Our Network includes:

Marine Surveyors,	Project Managers,	Professional Engineers and Drafting Services,
Insurance companies,	Marine Brokers,	Fabrication and Welding companies,
Marine Construction,	Dredging service providers,	Transportation and logistics service providers,
Material suppliers,	Material Testing Facilities,	Commissioning Engineers.

SERVICES OFFERED

Vessel Surveys

- Vessel Condition
- On/Off Hire
- Vessel / Project Suitability
- Client Vetting Assessment
- Hull/Machinery Damage
- Hull/ Machinery Repair
- Vessel Modification
- Insurance valuation
- Pre-voyage risk assessment
- Financial Institution valuation
- Pre-Purchase condition assessment

Marine Warranty Surveys

- Heavy Lift operations
- Load-out facility / plant assessment
- Vessel Load-out operation
- Seafastening inspection
- Voyage planning review
- Towage operation and gear Inspection
- Engineering Document review
- NDT and Welding operation review
- Issuance of MWS approval certificates

Cargo Surveys

- Loading, Stowage & Discharge condition
- Cargo Damage survey
- Bulk Cargo hold cleanliness survey

Client Representation

- New-build client representative
- Modification client representative
- Repair client representative
- Modification / Repair Project Management
- Quality Assurance project development
- Quality Control inspections (Marine/Subsea)
- Fleet Aggregate Risk Assessments
- Bollard Pull Testing and certification
- Inclining Experiment Management
- Repair planning and production drawings

Statutory Inspection

- Cook Islands Flag Authority inspector
- MLC2006 Approved inspector

Consulting

- Developing Client Intellectual Property
- Unique project design solutions
- Production Facilities Assessment
- Tender Evaluation
- Contract Expert subject matter review.



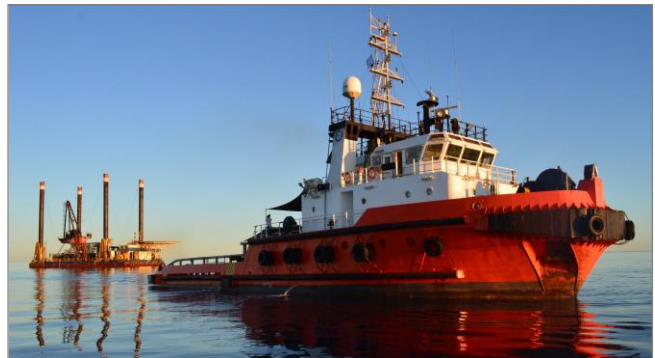
Mining Company Transhipper Modification/Repair Project



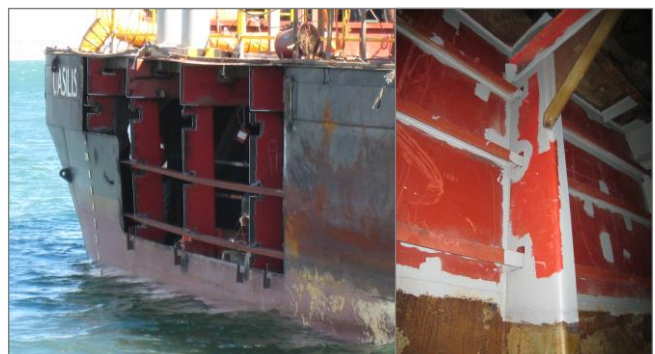
Bulk carrier pre-purchase inspection



High Value Cargo - Reel Loadout & Seafastening



Rig Towage Survey and Approval certificates



In-water structural repair – Hull impact damage

AREA OF OPERATION

We provide services **Worldwide**.

AMS operates out of Perth, Western Australia.

AMS personnel had contractors have completed tasks in;

- ***Oceania.***
Australia, Papua New Guinea,
New Zealand, Fiji, Solomon Islands,
Tahiti.
- ***South East Asia***
Singapore, Malaysia, Indonesia,
Philippines.
- ***Far East***
P.R China, South Korea
- ***European Union***
Hamburg, Germany
- ***U.S.A***
Houston, Texas



Loadout Operation, Loyang Singapore



New build construction, Australia



Tailshaft Damage survey, Singapore

CUSTOMERS

Due to the collaborative nature of marine projects, AMS has provided services to both individual companies and project groups. These include:

- DOF Subsea Australia
- P&O Maritime
- OAMPS insurance brokers
- Maritime Cook Islands Authority
- Royston Australia > Teekay Shipping > BHP Billiton
- Loreto Maritime > Citic Pacific > CPPC
- Cape Preston Port Company > Sino Iron Mining
- Defence Material Organization > Royal Australian Navy

CONTACT DETAILS

This capability statement provides an overview of our services and experience.

Please contact us to discuss your particular requirements and situations to determine how we can assist you.

Mr Justin Bentink

Director

Principle Marine Surveyor | Naval Architect | Fabrication Tradesperson



PO Box 4173 BALDIVIS WA 6171
U9/3 Benjamin Way ROCKINGHAM WA 6168



+61 (0) 428 000 900



justin.bentink@anchorms.com.au